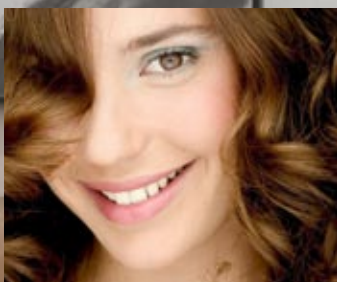




HUMIDIFICATION  
THE COMFORT AIR HUMIDIFIER AND  
CLEANER WITH EVAPORATING TECH-  
NOLOGY. ECONOMICAL. QUIET.  
AND VERY EASY TO OPERATE.

DEFENSOR PH15/PH27





Key benefits



### Why Defensor PH15 and Defensor PH27?

#### Powerful.

The Defensor PH15 and Defensor PH27 improve air in museums, galleries, large offices, tobacco warehouses and other spacious premises.

#### Teamwork.

The wireless external sensor remotely coordinates the performance of all connected PH15 and PH27 units in very large rooms. This dispenses with cables and ensures optimum humidification throughout the premise.

#### For winter and summer.

Simply change the filter in summer, and the Defensor PH15 and PH27 clean air of odours, pollen and fine dust, allowing you to breathe easy again.

#### Water refilling is made easy

The PH15 and PH27 can be commissioned without any effort – simply by rolling the tank to the nearest tap. Or you can connect your unit directly to the mains water supply, employing Aquastop for maximum safety.

#### Plug in, switch on, breathe in

To operate the PH15 or PH27, simply insert the plug in the socket and fill the water tank. This improves the condition of air in museums, galleries or residential accommodation – without the assistance of a technician.

#### Economical consumption

Evaporating technology is among the most energy-efficient forms of technology. The program mode enables you to save even more energy: your PH15 and PH27 operate with a time switch control that only humidifies your rooms when it is really necessary.

#### Hygienic and fresh

When the air in your rooms should not only be fresh and moist, but also free of bacteria: the silver ionisation rod allows your humidifier to destroy bacteria in evaporation water and ensures that humidification is flawless and hygienic.

# Defensor PH15 Defensor PH27

HUMIDIFICATION

Evaporator mat

Coarse dust filter  
or Quattro filter

Defensor PH15

Trolley water tank

Evaporator mat

Coarse dust filter  
or Quattro filter

Defensor PH27

Trolley water tank

 **Defensor**



### Simple to operate

Pull out the handle, tilt the tank and get rolling – refilling is effortless if the next water source is some distance away. The rollers move smoothly, so that even a completely full 20 or 30 litre tank can be returned to its position without any problem and fitted again with a “click”. The PH15A and PH27A models are designed for locations with a direct water connection: they can be connected to the mains water supply, and the Aquastop system ensures that only the volume of water that can be evaporated flows into the unit.



### Practically maintenance-free

PH15 and PH27 labour untiringly to achieve optimum air humidity in your premises. The units also run reliably and safely in areas where water has a high mineral content. The few components which require cleaning from time to time are easy to access and can be assembled with ease – without the need for a technician.

### Programmed economy

You can control humidification capacity at the push of a button and set the desired humidification time with precision to the exact minute. This means that the PH15 and PH27 only function when it is really necessary, and you only humidify the air to the extent you really need. This saves water and electric energy, and your operating costs are reduced as a result. The key control panel lock secures your unit against unauthorised manipulation – an indispensable advantage in public buildings.



### Hygienically clean

The PH27 is manufactured with an integrated silver ionising unit, and the silver rod can be retrofitted to the PH15. The bacteria in evaporating water are thus destroyed, and humidified air attains the desired level of biological purity. This means that the PH15 and PH27 can, for example, help protect sensitive exhibits in museums.



### Simple control of large systems

An integrated sensor measures the humidity of ambient air for each unit, allowing the unit to automatically adapt its output. An external wireless sensor (radio hygostat) is available for the coordination of humidification in large premises by several units. Remote transmission of its measurement results to the connected PH15 and PH27 units enables simultaneous and optimum humidification of these rooms without the need for bothersome connection cables.

### Humidification and cleaning

The filter can be changed with ease – and your humidifier is converted into an air cleaner which effectively protects you and your visitors from harmful pollen, dust particles and unpleasant odours. This means that the PH15 and PH27 also make an important contribution to health in summer.

# DEFENSOR PH15/PH27

DEFENSOR PH15? DEFENSOR PH27? CHOOSE THE UNIT THAT BEST SUITS YOUR REQUIREMENTS



Defensor PH15



Defensor PH27

Although the “innards” of the two comfort humidifiers differ considerably: the Defensor PH15 and Defensor PH27 both perform with the same impressiveness when it comes to reliability, user-comfort and efficiency. The main difference: the size of the water tank and the maximum size of the rooms to be humidified and standard equipment.

	PH15	PH27
Electronic water level detector	■	■
Electronic overflow detector	■	■
Silver ionising	●	■
Filter set for air cleaning	●	●
Water connection	●	●
Control via radio hygrostat	●	●

■ Standard  
● Option

### The perfect additions to your system

- Radio hygrostat
- Water leak sensor
- Water leak tray
- Sieve filter for water connection

### Technical data

Typ	PH15				PH27			
	1	2	3	4	1	2	3	4
Capacity levels	1	2	3	4	1	2	3	4
Humidification capacity [l/h]								
at 25°C and 20%rH	0.8	1.1	1.5	1.7	1.1	1.4	2.1	2.7
at 23°C and 45%rH	0.6	0.8	1.0	1.3	0.7	0.9	1.3	1.8
Air circulation rate [m <sup>3</sup> /h]	155	195	280	340	290	390	600	850
for rooms up to a max. of [m <sup>3</sup> ]	280	380	510	580	380	480	710	910
Sound pressure level [dBA] (according DIN 45635, part 1)	32	38	45	50	37	44	55	65
Mains voltage	220..240 VAC/1, 50..60Hz or 90..100 VAC/1, 50..60Hz							
Power consumption	max. 72 watts				max. 148 watts			
Weight (empty)	25 kg				33 kg			
Water tank capacity	20 litres				30 litres			
Dimensions (W x H x D)	730 x 610 x 370				730 x 610 x 450			
Conformity	VDE, CE, GS, GOST				VDE, CE, GS, GOST			

Solutions for Indoor Climate

- HEATING
- VENTILATION
- COOLING
- HUMIDIFICATION
- DEHUMIDIFICATION

Walter Meier (Climate International) Ltd.  
Talstrasse 35-37, 8808 Pfäffikon, Switzerland  
Tel. +41 55 416 61 11, Fax +41 55 416 62 62  
info@waltermeier.com, www.waltermeier.com